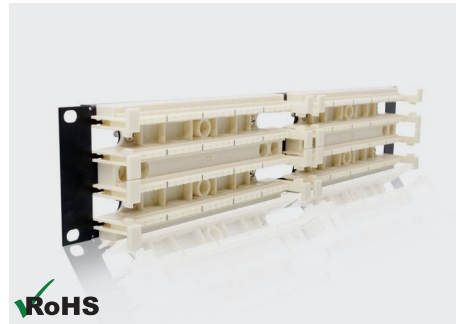


## 110 19" CROSS CONNECTION PANEL

Rack mount 19" cross connection panels provide horizontal management and organization of patch cables and jumper wire. They also incorporate legs for backboard mounting, allowing the cable to be routed from behind. This panel requires connecting blocks / clips. The Panels are available in 100, 200, 300 and 400 pair.



### SPECIFICATION

Material of Construction-Panel	Cold rolled steel, Black powder coated
Material of Construction-Wiring Blocks	High Impact, flame retardant PC
Material of Construction-blind rivet	Aluminium
Dimension	19" X 1.76" X 1.85"

### ORDERING INFORMATION

Part Number	Description
232-100	110 Cross Connection Panel 100 Pair 1U
232-200	110 Cross Connection Panel 200 Pair 2U
232-300	110 Cross Connection Panel 300 Pair 3U
232-400	110 Cross Connection Panel 400 Pair 4U

### PACKING INFORMATION

Part Number	Packing Qty.	Packing Mode	N.W (kg)	G.W (kg)	Dimension (mm)
232-100	10 x 2 x 1	Carton Box	14.0	15.0	545 x 260 x 395
232-200	10 x 1	Carton Box	13.0	14.0	545 x 260 x 395
232-300	5 x 1	Carton Box	12.0	13.0	545 x 260 x 395
232-400	5 x 1	Carton Box	15.0	16.0	545 x 260 x 395